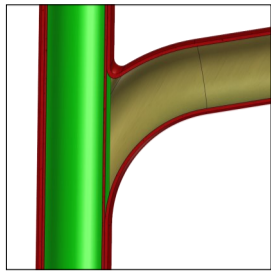
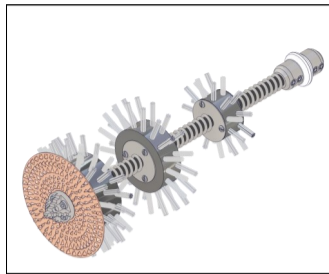


**PLASTIC PIPES**

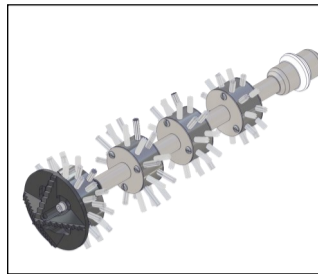
S  
T  
A  
N  
D  
A  
R  
D



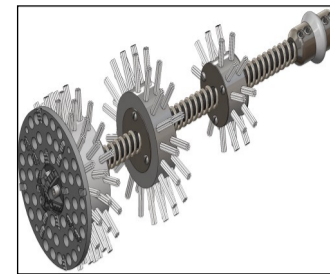
UNLINED



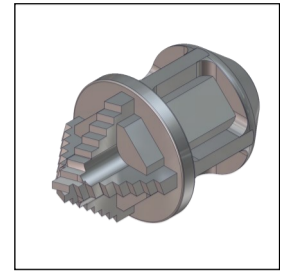
Twister (unlined pipes)



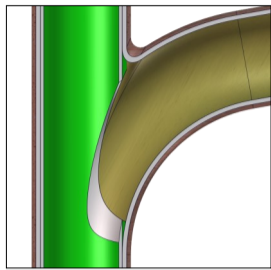
Twister Express (unlined pipes)



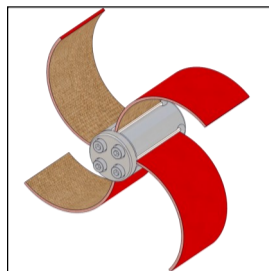
Tiger Twister (unlined pipes)



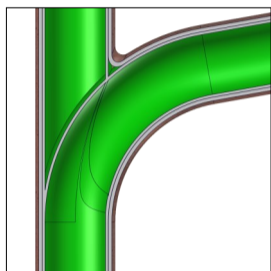
Special Drill Head (PVC)



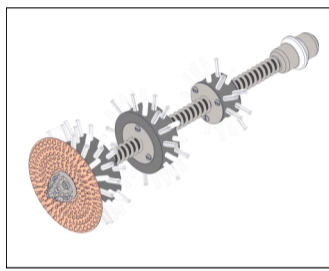
OPENED



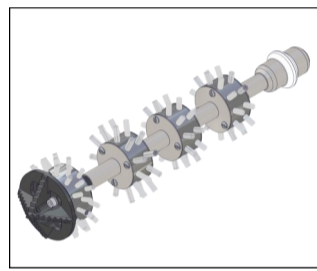
Smart Cutter™



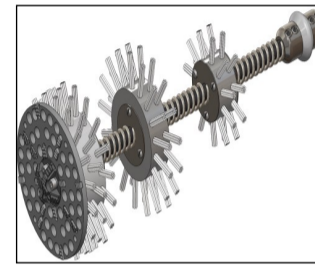
LINED



Twister (lined pipes)

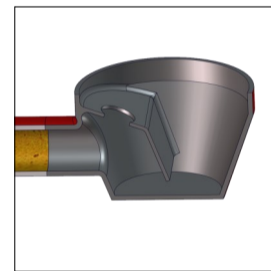


Twister Express (lined pipes)



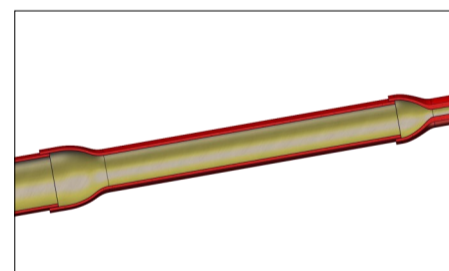
Tiger Twister (lined pipes)

S  
P  
E  
C  
I  
A  
L

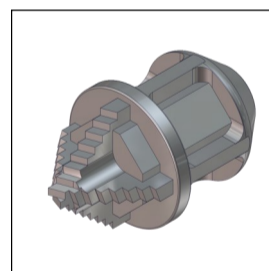


FLOOR DRAIN

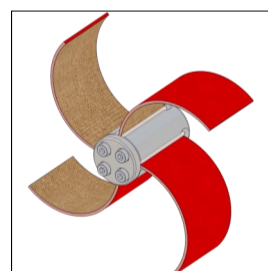
**Refer to the Mini Cleaner / Mini Miller Range of Machines**



SIZE CHANGE



Special Drill Head (PVC)



Smart Cutter™

**Maxi Miller**

Shaft Diameter: **12mm (1/2")**

Range: **30 metres (100 ft)**

Additional Extension:\*\* **10 metres (32 ft)**

Recommended Diameter Range : **DN70 - 250 (3 - 10")**

**Available Tools**

**Size Range**

Twister DN100 - 200 (4 - 8")

Twister Express DN70 - 100 (3 - 4")

Tiger Twister DN100 - 200 (4 - 8")

Smart Cutter™ DN70 - 250 (3 - 10")

Special Drill Head (PVC) DN70 - 100 (3 - 4")

\*\* Shaft extension sold separately