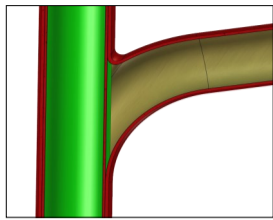
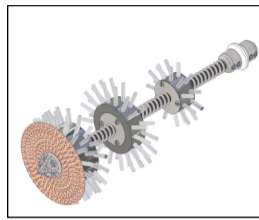


**GUSSROHR**

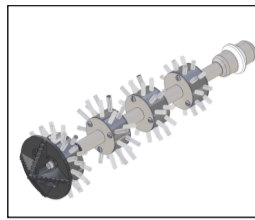
S  
T  
A  
N  
D  
A  
R  
D



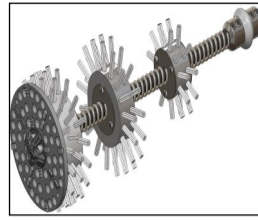
UNGELINERT



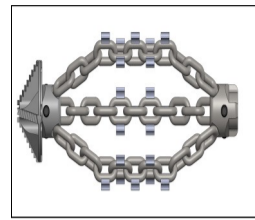
Twister  
(ungelinerte Rohre)



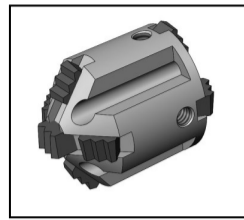
Twister Express  
(ungelinerte Rohre)



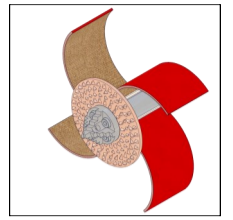
Tiger Twister  
(ungelinerte Rohre)



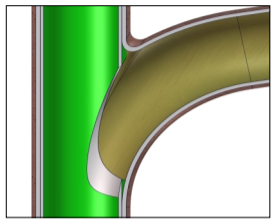
Express Bohrkette



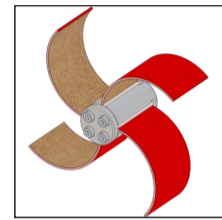
Tiger Bohr- oder  
Spezial-Bohrkopf



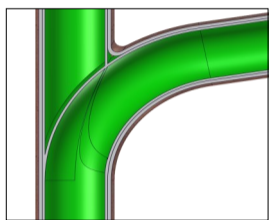
Smart Cutter™



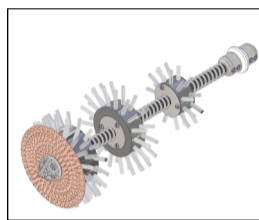
GEÖFFNET



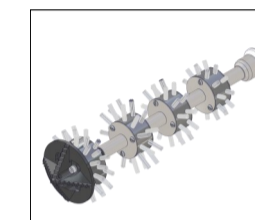
Smart Cutter™



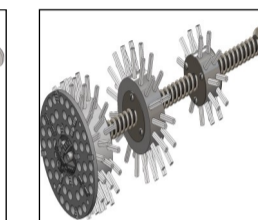
GELINERT



Twister  
(gelinerte Rohre)

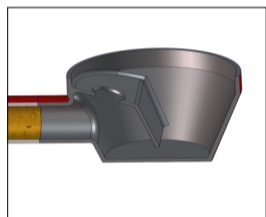


Twister Express  
(gelinerte Rohre)



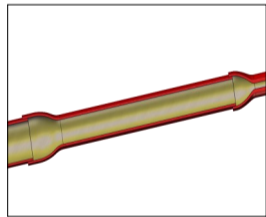
Tiger Twister  
(gelinerte Rohre)

S  
P  
E  
Z  
I  
A  
L

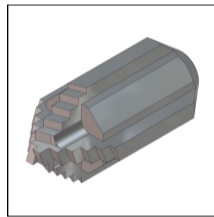


BODENABLAUF

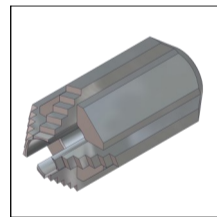
Weitere Informationen finden Sie im Mini Cleaner-/Mini Miller-Maschinensortiment



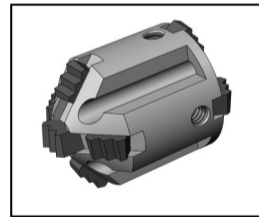
DURCHMESSERSPRUNG



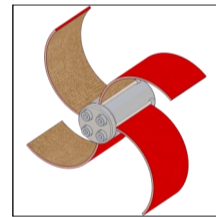
Spezial-Bohrkopf



Spezial-Bohrkopf  
(3D)



Tiger Bohrer



Smart Cutter™

**Maxi Miller**

Durchmesser Welle: **12mm (1/2")**

Reichweite: **30m (100 ft)**

Verlängerung\*: **Bis 15m (50 ft)**

Empfohlene Anwendung in Durchmesser: **DN70-250 (3-10")**

Verfügbare Werkzeuge	Anwendung in Rohren
Twister	DN100-200 (4-8")
Twister Express	DN70-100 (3-4")
Tiger Twister	DN100-200 (4-8")
Express Bohrkette	DN100-150 (4-6")
Smart Cutter™	DN70-250 (3-10")
Spezial-Bohrkopf	DN70-100 (3-4")
Spezial-Bohrkopf (3D)	DN70-100 (3-4")
Tiger Bohrer	DN70-100 (3-4")

\* Verlängerungen sind separat erhältlich.