

Generally, this resin system can be applied when the ambient temperature is between 10°C to 60°C (50°F to 140°F), however, when the temperature of the coating surface starts to drop below the operational range the operator needs to take further precautions, detailed below, to ensure that the pipe can be successfully coated.

1. Pre-heat the resin cartridges to 30°C (85°F).
2. Store the resin cartridges in a temperature controlled environment such as an insulated / hot box.
3. Using a thermal temperature gun check and maintain the temperature of the mixed resin, in the delivery cup, between 21°C to 30°C (70°F to 85°F).
4. It is advisable, when working externally, to construct or erect a suitable tent to provide cover from extreme weather conditions such as cold, wind, snow and rain.
5. Get as much heat into the tent as possible using indirect fired gas heaters or electrical heaters.
6. Insulate all external pipework using concrete / thermal blankets or duvets.
7. Using a hot air heater at the top of the pipe and a fan at the bottom of the pipe circulate warm air through the pipe.

If the temperature of the resin material drops below 21°C (70°F) you may have issues with the resin cartridges leaking due to excessive back pressure or be struggling to pump the resin through the resin delivery hose to the brushes. When it gets too cold the resin starts to behave like treacle / toffee and you can see it oozing out of the resin delivery tube, looks very tacky and does not want to stick to either the brushes or the wall of the pipe.

Helpful Items When Operating in Cold Weather



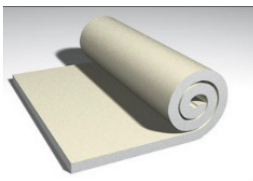
PORTABLE SITE SHELTER



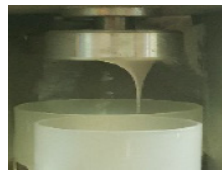
PORTABLE ELECTRICAL HEATER



INDIRECT FIRED GAS HEATER



CONCRETE FROST BLANKETS



RESIN LEAKAGE DUE TO LOW TEMPERATURES