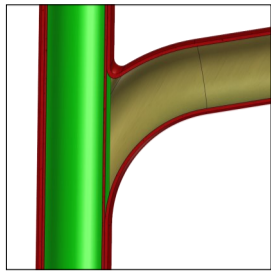
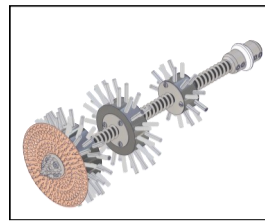


**CLAY PIPES**

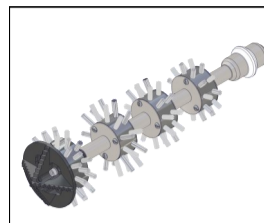
S  
T  
A  
N  
D  
A  
R  
D



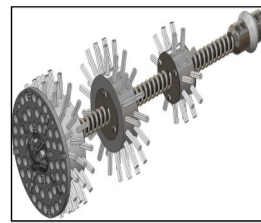
UNLINED



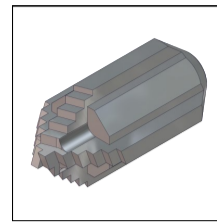
Twister  
(unlined pipes)



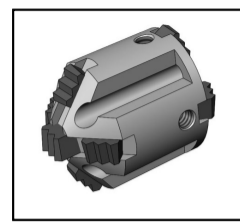
Twister Express  
(unlined pipes)



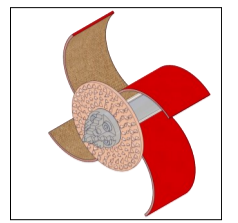
Tiger Twister  
(unlined pipes)



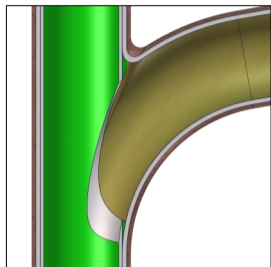
Special Drill Head



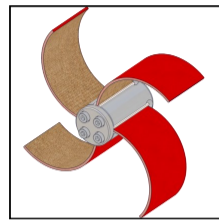
Tiger Bore



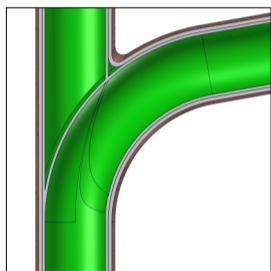
Smart Cutter™



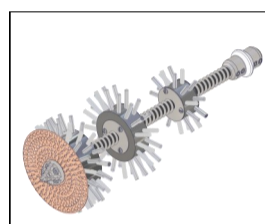
OPENED



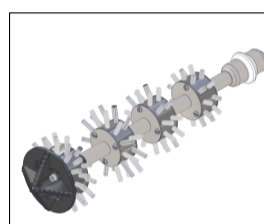
Smart Cutter™



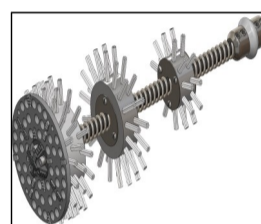
LINED



Twister  
(lined pipes)

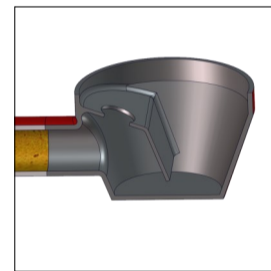


Twister Express  
(lined pipes)



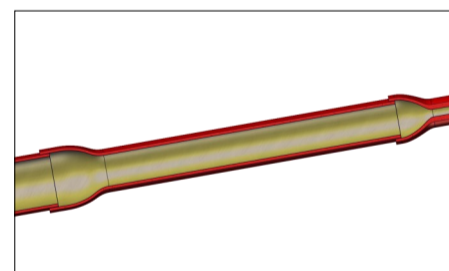
Tiger Twister  
(lined pipes)

S  
P  
E  
C  
I  
A  
L

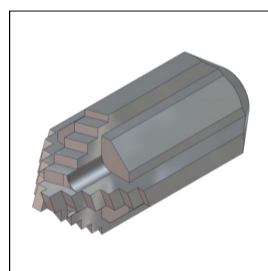


FLOOR DRAIN

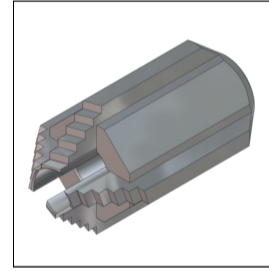
Refer to the Mini Cleaner / Mini Miller Range of Machines



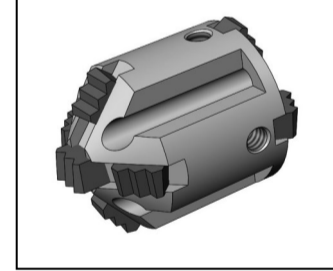
SIZE CHANGE



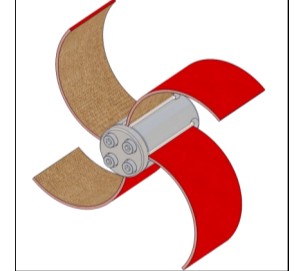
Special Drill Head



Special Drill Head (3D)



Tiger Bore



Smart Cutter™

**Super Midi Miller**

Shaft Diameter: 12mm (1/2")

Range: 20 metres (65 ft)

Additional Extension:\*\* 10 metres (32 ft)

Recommended Diameter Range : DN70 - 150 (3 - 6")

**Available Tools                      Size Range**

Twister                                      DN100 - 150 (4 - 6")

Twister Express                          DN70 - 100 (3 - 4")

Tiger Twister                              DN100 - 150 (4 - 6")

Smart Cutter™                              DN70 - 150 (3 - 6")

Special Drill Head                          DN70 - 100 (3 - 4")

Special Drill Head (3D)                    DN70 - 100 (3 - 4")

Tiger Bore                                    DN70 - 100 (3 - 4")

\*\* Shaft extension sold separately