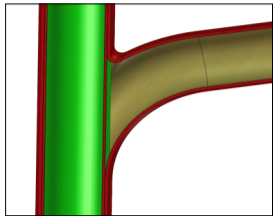


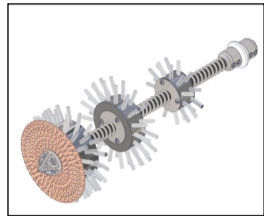
SUPER MIDI MILLER

GUSSROHR

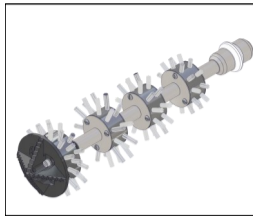
S
T
A
N
D
A
R
D



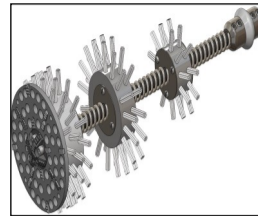
UNGELINERT



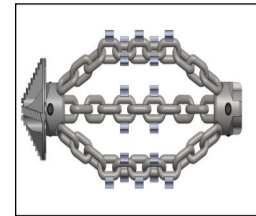
Standard Twister
(ungelinerte Rohre)



Twister Express
(ungelinerte Rohre)



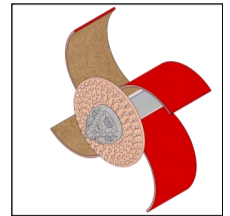
Tiger Twister
(ungelinerte Rohre)



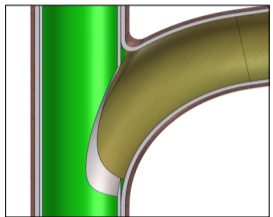
Express Bohrkette



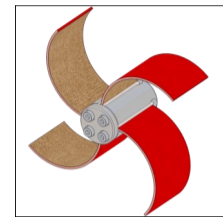
Tiger Bohrer- oder
Spezial-Bohrkopf



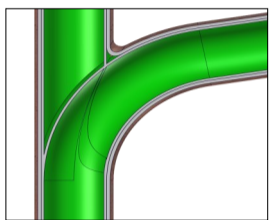
Smart Cutter™



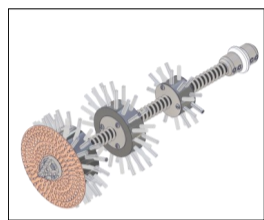
GEÖFFNET



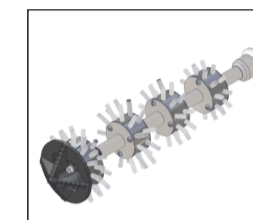
Smart Cutter™



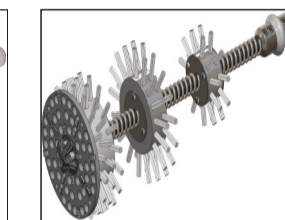
GELINERT



Twister
(gelinerte Rohre)

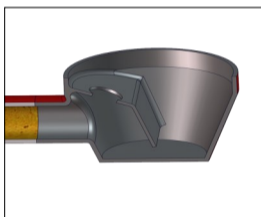


Twister Express
(gelinerte Rohre)



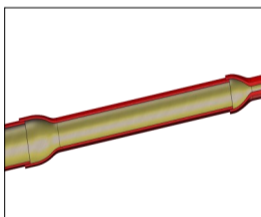
Tiger Twister
(gelinerte Rohre)

S
P
E
Z
I
A
L

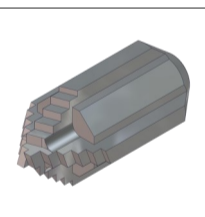


BODENABLAUF

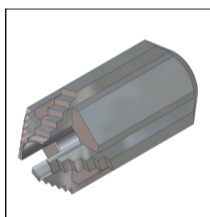
Weitere Informationen finden Sie im Mini Cleaner-/Mini Miller-Maschinensortiment



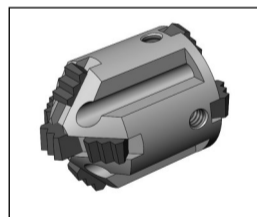
DURCHMESSERSPRUNG



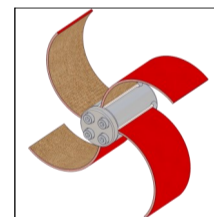
Spezial-Bohrkopf



Spezial-Bohrkopf
(3D)



Tiger Bohrer



Smart Cutter™

Super Midi Miller

Durchmesser Welle: 12mm (1/2")

Reichweite: 20m (65 ft)

Verlängerung*: 10m (32 ft)

Empfohlene Anwendung in Durchmesser:
DN70-150 (3-6")

Verfügbare Werkzeuge	Anwendung in Rohren
Twister	DN100-150 (4-6")
Twister Express	DN70-100 (3-4")
Tiger Twister	DN100-150 (4-6")
Express Bohrkette	DN100-150 (4-6")
Smart Cutter™	DN70-150 (3-6")
Spezial-Bohrkopf	DN70-100 (3-4")
Spezial-Bohrkopf (3D)	DN70-100 (3-4")
Tiger Bohrer	DN70-100 (3-4")

* Verlängerung ist separat erhältlich.