

# Operators Check List

## Connection Collar 2.0

### Installation Tool

**Three Installation Tool Head sizes are available:**

- Installation Tool Head — 31mm (1.22”) for DN70 - 100 (3-4”) installations
- Installation Tool Head — 51mm (2”) for DN150 - 200 (6-8”) installations
- Installation Tool Head — 91mm (3.58”) for DN225 - 300 (9-12”) installations



**Tools and Materials:**



Special Installation Tool Head **Sealing Tape** helps to provide a complete seal between the Installation Tool Head and Bladder. It also has a high temperature resistance which works extremely well when using steam curing.

Installation Tool Head **Cover Tape** is a strong tape used to cover the Cable Ties which fasten the Bladder onto the Installation Tool Head.



**Hose Clips** are the recommended fastener to be used with most of the Installation Tool Heads for clamping bladders onto the head.



An alternative to the Hose Clips for the 31mm (1.22”) Installation Tool Head when being used in multiple bends (where a hose clamp may cause hangups) is the **Strapping Tool** combined with the very strong stainless steel **Cable Ties**.

The Installation Tool Head **Air Adapter** is used to replace the Turning Handle.



**Installation Tool Accessories Starter Kit** includes: Hybrid Tape, Sealing Tape, Cover Tape, & Bladder Lubricant Spray in a Picote Tool Bag.

**Constructing the Installation Bladder:**

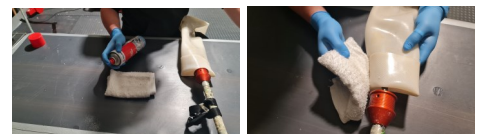
1. Clean surfaces on both ends.



2. Add Sealing Tape to both ends. Sealing Tape is vulcanizing tape and you need to stretch it over itself to make it stick. Add 2-3 layers.



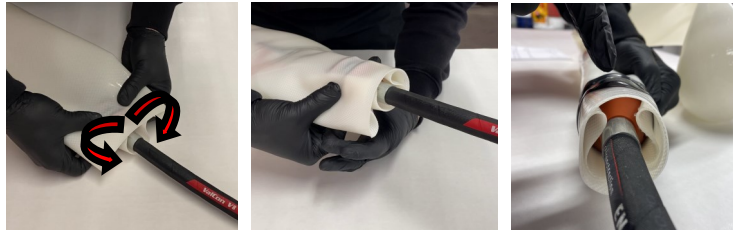
3. Turnover the ends of the bladder and thoroughly clean using brake cleaner or acetone.



4. Open the Bladder and put the Installation Tool Head inside it. Pay attention to the lateral direction when installing Y-connections. Always align the Installation Tool along the seam of the Bladder.

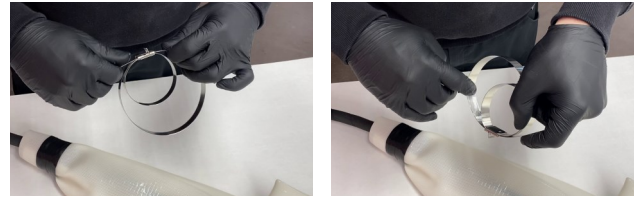


5. Before adding the Sealing Tape on the Bladder, make sure it is centralised on the Installation Tool Head.



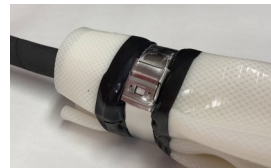
6. Make the folds and add the Sealing Tape. The Sealing Tape needs to be wide enough to cover the groove of the Installation Tool Head sleeve.

7. If using the 31mm (1.22") Installation Tool Head in bends, use the Cable Tie. Make double rounds on the Cable Tie. Add lubricant between the first and second layer to reduce friction. **Picote Bladder Release Agent** can be used as lubricant.



8. Put the Cable Tie over the Bladder and position the lock to either side of the bladder folds. Tighten the Cable Tie using the Strapping Tool.

9. Cut the excess Cable Tie and lock it with the Strapping Tool.



## **⚠ WARNING**

10. Test the Bladder is not leaking by using the Installation Tool Head Air Adapter and adding air. Close the steaming valve to make it easier to hear possible leaks.

**USE A PRESSURE REGULATOR! FAILING TO DO SO WILL DAMAGE THE BLADDER.**



11. Add Cover Tape over the Hose Clips / Cable Ties.

12. Spray Bladder Lubricant inside the Bladder through the coupling (not the steaming valve). Spread the lubricant evenly by rubbing the Bladder walls together.



13. Test the lubrication by pushing the Bladder lateral inside the main body. Add additional lubrication if necessary.